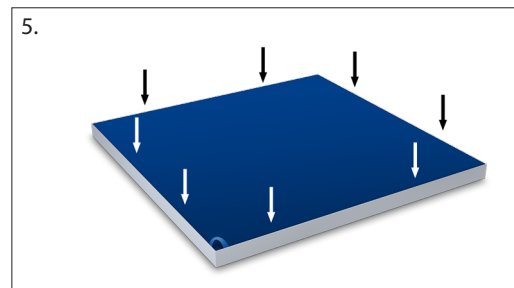
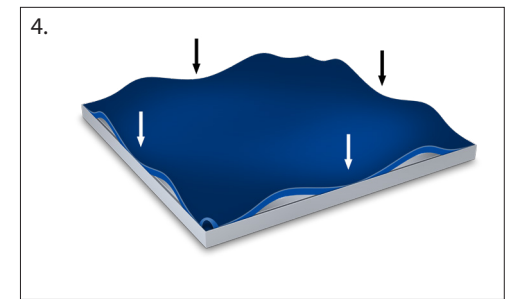
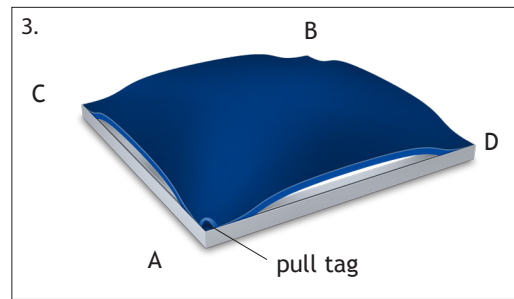
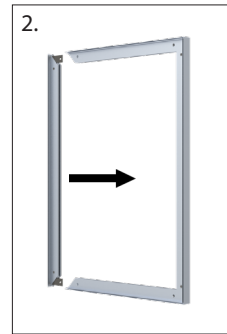
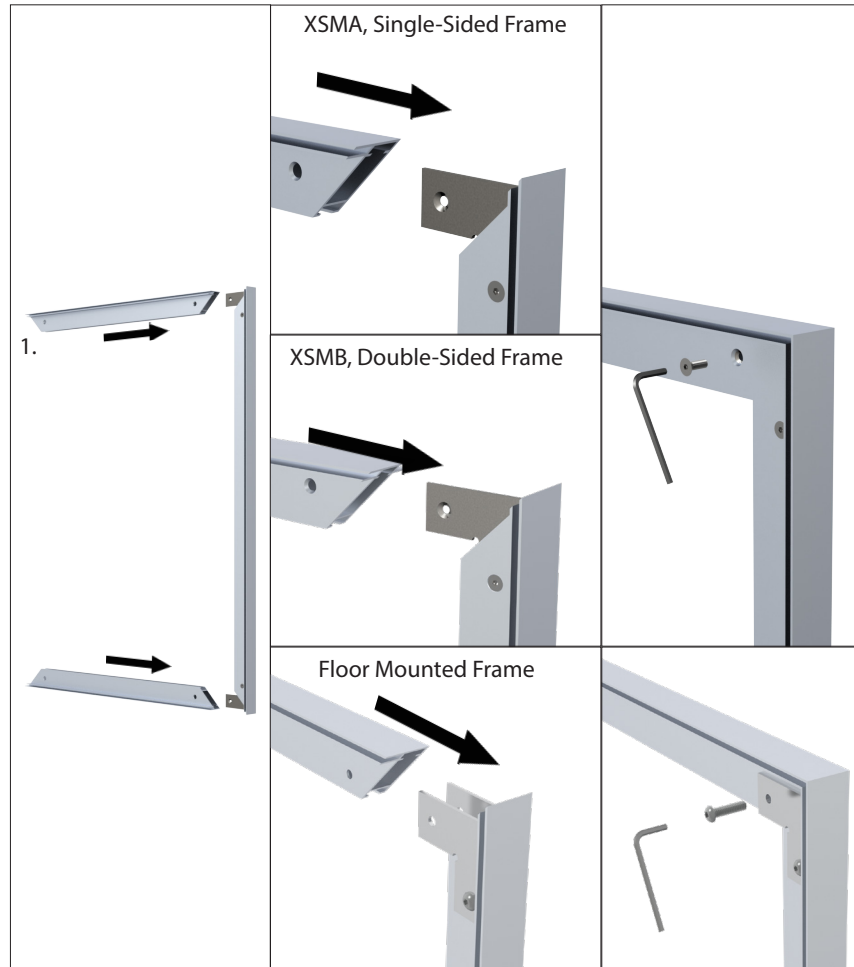
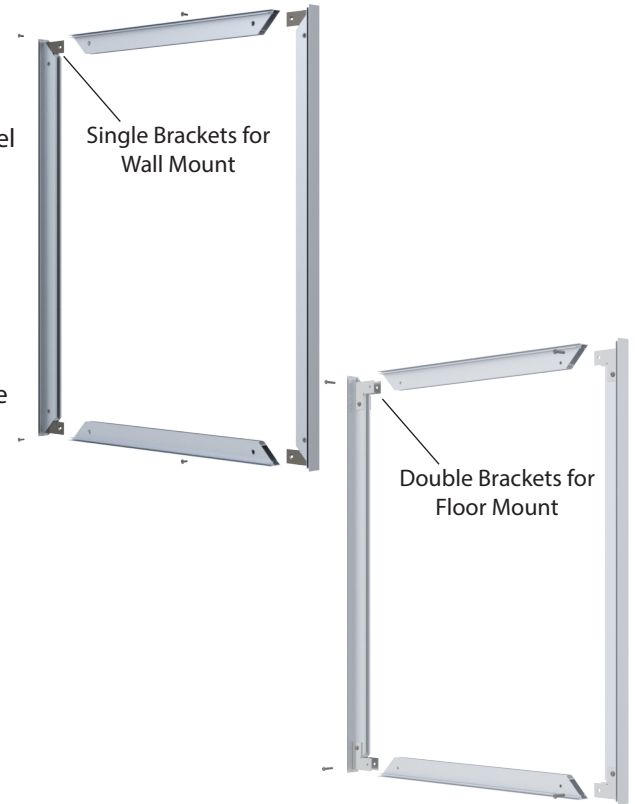


Charisma Frame™ - XSM Series

For proper assembly, it is important to notice that two frame-sides have brackets premounted, and two sides do not.

1. Using the screws provided, attach the two frame-sides without bracket to the first frame side with brackets.
2. Connect the second frame-side with brackets to the assembled portion of the frame.
3. To install the graphic, take the corner with the pull tag on it and press about 6"-10" of silicone into the frame channel corner A. Repeat for the opposite corner B. Repeat for the next corner C. Lastly, repeat for the final corner D.
4. After all corners are pressed in, press the silicone into the frame channel at the mid-points on all four sides.
5. Press silicone into frame evenly between the corners and mid-points.
This prevents the graphic from bunching up or stretching too much and will ensure a smooth and tight fit.
6. To remove the graphic from the frame, simply pull up on the pull tag.
7. *FOR XSMB SERIES ONLY:* Repeat graphic installation for reverse side (not shown).

NOTE: For assembly purposes, product shown below is a generic frame. Although the number of support bars and size of frame may differ, instructions remain the same.



Charisma Frame™ - XSM Series Mounting Options

Wall Mount

Wall Mount Brackets

1. Mount top brackets onto wall. Use optional molly anchors if mounting to drywall.
2. Slide frame onto top brackets.
3. Mount bottom brackets to wall to secure frame. Use optional molly anchors if mounting to drywall.

Distortion Brackets - For leveling frame and eliminating sagging.

4. Mount top brackets onto wall. Use optional molly anchors if mounting to drywall.
5. Slide frame onto top brackets tighten adjustable screw so that it rests inside the frame channel.
6. Mount bottom brackets to wall to secure frame. Use optional molly anchors if mounting to drywall. Tighten adjustable screw so that it rests inside the frame channel.

Ceiling Mount

XSMA (Single-Sided Frame) and XSMB (Double-Sided Frame)

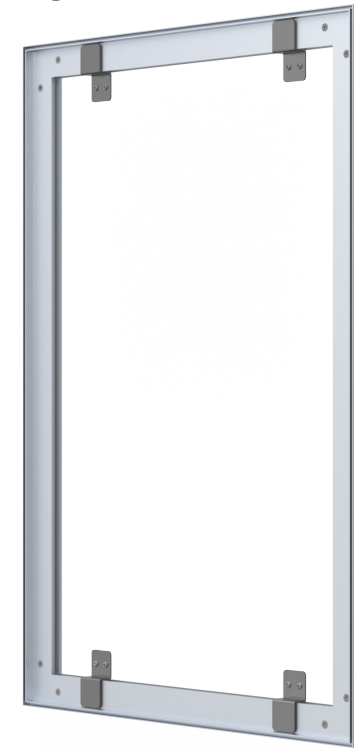
7. Connect hanging wires to eyebolts on frame.

Base Mount

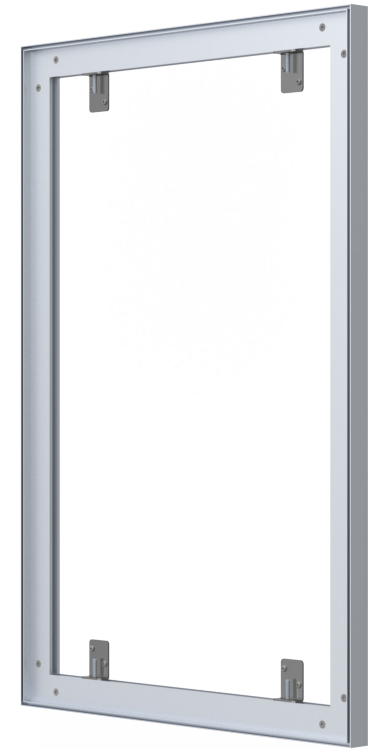
XSMA (Single-Sided Frame) and XSMB (Double-Sided Frame)

8. Determine base style. Attached the base to the frame using the Phillips screws provided.

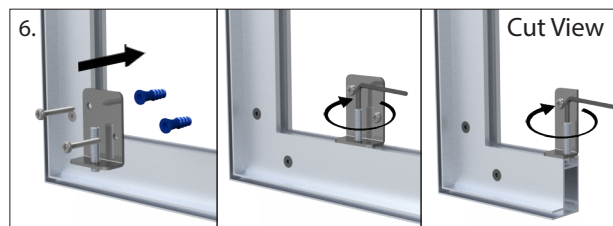
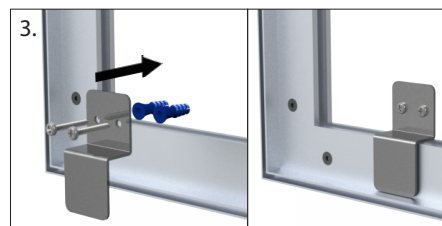
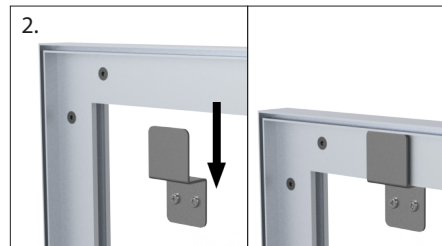
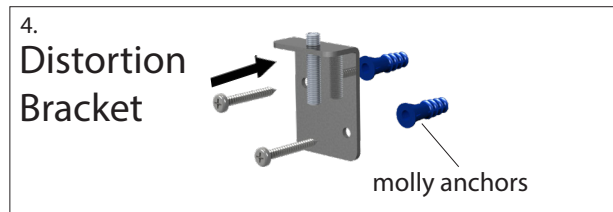
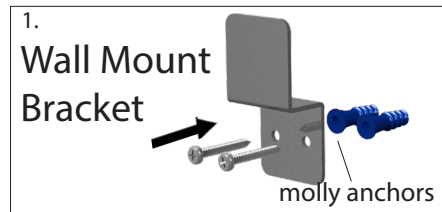
NOTE: Size of frame may differ, instructions remain the same.



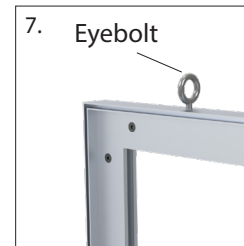
XSMA w/Standard Brackets



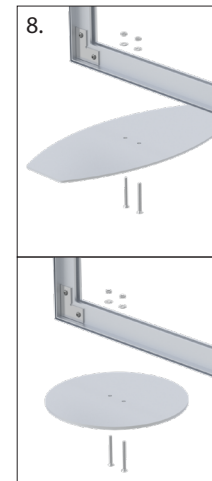
XSMA w/Distortion Brackets



Ceiling Mount



Base Mount



XSMA/XSMB with Base Plates